

MINIMUM PRESSURE VALVES

PARTS LIST AND MATERIAL SPECIFICATION

1	BODY	GREY CAST IRON or ALUMINIUM
2	PISTON	ALUMINIUM ALLOY
3	PLUNGER	ALUMINIUM ALLOY
4	SEAL	VITON

FLOW CHART - FULL LIFT FLOW OF AIR AT 100 p.s.i.g. (SCFM)

	VALVE SPECIFICATION NUMBER			
	419280000	419290000	419300000	419310000
AT 1 p.s.i.g. PRESSURE DROP	FLOW NOT TESTED	465	1500	320

TECHNICAL INFORMATION TABLE

VALVE SPECIFICATION NUMBER	INLET CONNECTION	OUTLET CONNECTION	MINIMUM PRESSURE (P.S.I.G.)	COMMENTS
419280000	1 1/4" BSP TAPER FEMALE	1 1/4" BSP PARALLEL	RANGE 35 - 75	SUITABLE FOR WORKING PRESSURE UP TO 200 P.S.I.G.
419290000	2" NPT FEMALE	2" NPT FEMALE	60 - 75 ONLY	-
419300000	3" FLANGED	3" FLANGED	46	SINGLE SET PRESSURE, BUT CAN BE ADJUSTED
419310000	1 1/2" BSP PARALLEL FEMALE	1 1/2" BSP PARALLEL FEMALE	RANGE 33 - 75	SUITABLE FOR WORKING PRESSURE UP TO 200 P.S.I.G.

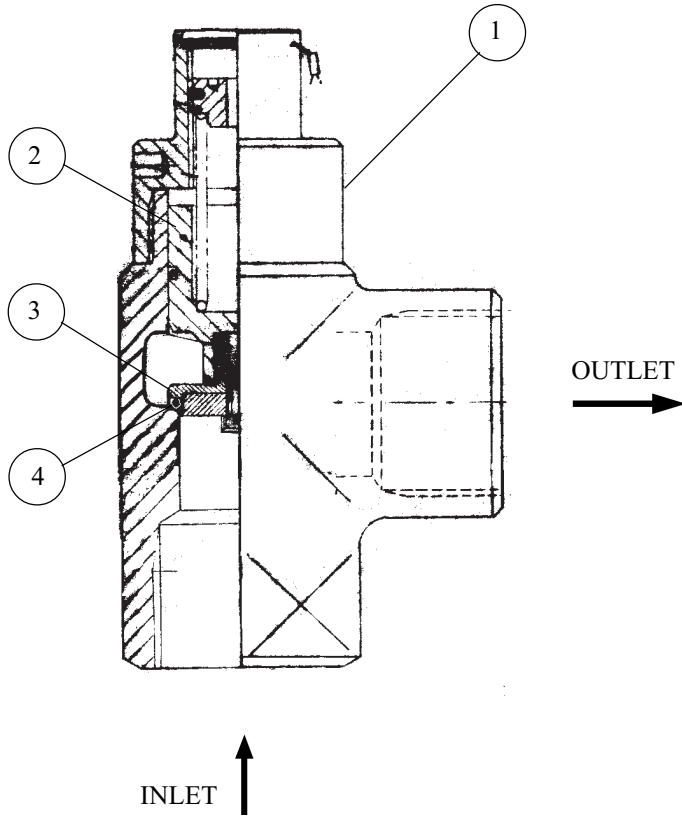


DIAGRAM IS REPRESENTATIVE OF VALVE NUMBERS 419280000 AND 419310000



SEETRU LIMITED ALBION DOCKSIDE WORKS,
HANOVER PLACE, BRISTOL. BS1 6UT
TELEPHONE (0117) 927 9204, FAX (0117) 929 8193

CURRENTLY AVAILABLE RANGE OF
MINIMUM PRESSURE VALVES

MINIMUM
PRESSURE
VALVES

MINIMUM PRESSURE VALVES

DESCRIPTION DESIGN

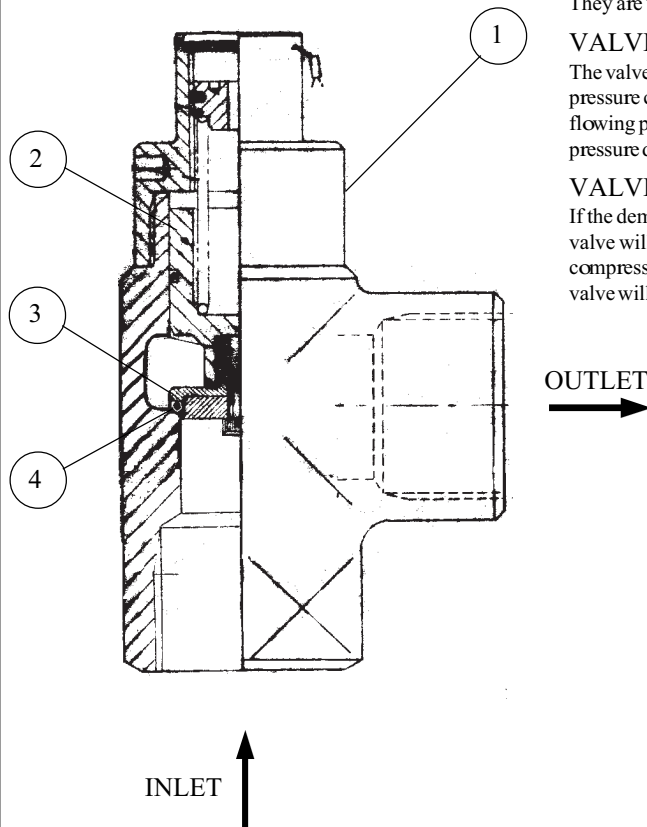
Minimum pressure check valves are spring loaded pressure control valves with an inbuilt check (non-return) valve. They are usually fitted to the AIR/OIL separator tank.

VALVE OPENING

The valve opens when the increasing inlet pressure exceeds the adjusted opening pressure. Further increasing the pressure causes the piston to progressively open until the output of the compressor flows through the valve at the flowing pressure required. The valve size is selected to suit the flow required at the specified flowing pressure and pressure drop.

VALVE CLOSING

If the demand for air is such that the pressure at the valve inlet decreases to the specified minimum pressure, the valve will close to a position such that the flow through the valve will be equal to the flow produced by the compressor. If there is a back pressure down stream of the valve which is greater than the inlet pressure, the check valve will close.



PARTS LIST AND MATERIAL SPECIFICATION

1	BODY	GREY CAST IRON OR ALUMINIUM
2	PISTON	ALUMINIUM ALLOY
3	PLUNGER	ALUMINIUM ALLOY
4	SEAL	VITON

PRESSURE & FLOW DETAILS

Operating pressure range = 2.4 - 5.2 bar.g
 Maximum pressure = 13.8 bar.g
 Pressure drop as little as 0.07 bar.g

Flow up to 2548.5 m³/hr

CONNECTION DETAILS

THREAD TYPES AVAILABLE - BSP, BSP.T, NPT.									
INLET SIZE					OUTLET SIZE				
3/4"	1"	1 1/4"	1 1/2"	2"	3/4"	1"	1 1/4"	1 1/2"	2"
FLANGED CONNECTIONS ALSO AVAILABLE									



CONTACT SEETRU FOR FURTHER INFORMATION AND ASSISTANCE WITH PRODUCT SELECTION.

SEETRU LIMITED ALBION DOCKSIDE WORKS,
 HANOVER PLACE, BRISTOL. BS1 6UT
 TELEPHONE (0117) 927 9204, FAX (0117) 929 8193

CURRENTLY AVAILABLE RANGE OF
 MINIMUM PRESSURE VALVES

MINIMUM
 PRESSURE
 VALVES