

for Liquid

hygienic

Type 6L0

Clean Service/Hygienic Safety valves with Stainless Steel body <
Enclosed discharge valve with Tri-Clamp inlet connections <

Safety valve for food industry & other hygienic applications

Example Applications

- Liquid storage
- Food production plants
- Hygienic applications
- Pressure vessels

Specifications

- Inlet connections: 1/2" to 1" Tri-Clamp (depending on bore size)
- Temperature: -15°C to +200°C (depending on seal material)
- Pressure range: 0.7 to 30.0 bar (depending on bore size)

Materials of Construction

| Component | Material | Grade |
|----------------|-----------------|--------------|
| Inlet | Stainless Steel | 1.4404 (316) |
| Body | Stainless Steel | 1.4408 (316) |
| Internal parts | Stainless Steel | 1.4401 (316) |
| Spring | Stainless Steel | 1.4310 (302) |

SURFACE FINISH

Process Contact Surface

In accordance with ASME BPE-2005 Table SF-5.
Surface designation Ra Max 15 µinches, 0.4 µm, Electropolished.

Other Surfaces

Not greater than 60 µinches, 1.5 µm.



Approvals

- Designed in accordance with BS EN ISO-4126-1 &-7
- PED 2014/68/EU (CE)
- PE(S)R UK SI 2016 No. 1105 (UKCA)
- EAC



Seal Materials

| Seal Material | Temperature Range |
|---------------------------|-------------------|
| Perfluoroelastomer (FFKM) | -15°C to +200°C |

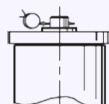
Standard seal materials shown, others are available.
Elastomer soft sealing specifically developed for food & pharmaceutical industries.

Compliant to:

1. FDA 21 CFR 177.2600
2. United States Pharmacopoeia (USP) Class VI
3. SP3A Sanitary Standards for Multiple Use Rubber Dairy Equipment No 18-03.

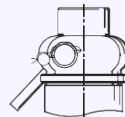
Easing Gear / Lifting Gear Options

- **Standard option:**



Sealed Cap (gas tight cap)

- **Other Options:**



Sealed lever (gas tight)

Technical information by bore size

| Bore size | 9.5mm (6L010) | | 13.7mm (6L013) | |
|--|---|------|----------------------|------|
| | Inlet Size | 1/2" | 3/4" | 3/4" |
| Outlet Size | 3/4" | | 1" | |
| Flow Area | 70.9mm ² | | 147.7mm ² | |
| H - Height (Sealed cap version) | 120mm | | 165mm | |
| TÜV allotted outflow coefficient | 0.59 | | 0.57 | |
| Weight (approximate) Kg | 0.9 | | 1.3 | |
| Set Pressure range - PED (CE) bar | 0.76 to 30.0 | | 0.7 to 27.0 | |
| Relieving pressure/fully open pressure | Set pressure +25% | | | |
| Reseating pressure | Set pressure max -20% down to 3 bar (Below 3 bar = 0.6 bar) | | | |

Stable operation on flows down to 50% of valve rated capacity.

Standard Thread Connection Types

- Tri-Clamp® compatible generally in accordance with ASME BPE 2005 & BS 4825-3.

Standard Outlet Connection Types

- BSP Female Pipe threads (G)

Valve Selection Guide

| Approval Required | Valve type | Select Bore | Inlet Size | Easing Gear | Seal Material |
|-------------------|------------|-----------------------------------|------------------------------------|--------------------------------|---------------------------|
| PED (CE) | 6L0 | Select bore size from above table | Select inlet size from above table | Select easing gear/top fitting | Perfluoroelastomer (FFKM) |
| | | | | | Other |

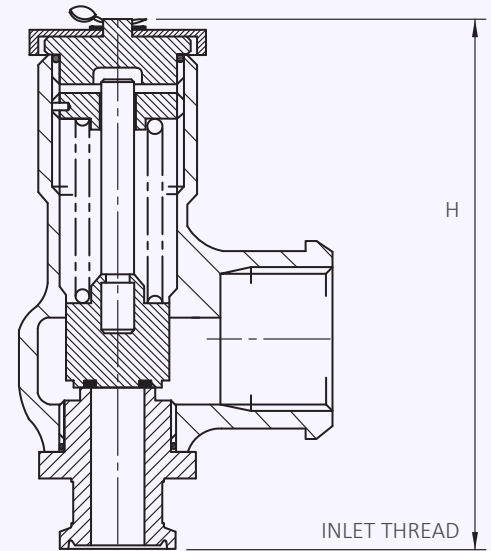
EAC marking available upon request

***Please send your selected details to Seetru and we can provide the full ordering code, price and lead-time.**

Example of Valve Selection Process

| | | | | | | | |
|-------------------|----------|------------|-----------|------------|-------------|---------------------------|--------------|
| Example Selection | PED (CE) | 6L0 | 9.5mm | 1/2" | Sealed Cap | Perfluoroelastomer (FFKM) | 3.5 bar |
| | Approval | Valve Type | Bore Size | Inlet Size | Easing Gear | Seal | Set Pressure |

Valve drawing



Capacity Table - In accordance with ISO 4126, Water at 15°C - kg/hour Type 6L0



| Set Pressure | | Bore Size (D0) | |
|--------------|-------|----------------|----------------|
| | | 9.5mm (6L010) | 13.7mm (6L013) |
| bar | psi | kg/hour | kg/hour |
| 0.7 | 10.15 | | 4001 |
| 0.76 | 11.02 | 2075 | 4169 |
| 1 | 14.5 | 2380 | 4782 |
| 2 | 29 | 3367 | 6759 |
| 3 | 43.5 | 4123 | 8284 |
| 4 | 58 | 4761 | 9560 |
| 5 | 72.5 | 5323 | 10694 |
| 6 | 87 | 5831 | 11708 |
| 7 | 101.5 | 6298 | 12654 |
| 8 | 116 | 6733 | 13519 |
| 9 | 130.5 | 7141 | 14348 |
| 10 | 145 | 7528 | 15116 |
| 15 | 217.5 | 9219 | 18523 |
| 20 | 290 | 10650 | 21376 |
| 22 | 319 | 11170 | 22419 |
| 25 | 362.5 | 11902 | 23914 |
| 27 | 391.5 | 12369 | 24837 |
| 30 | 435 | 13040 | |
| | | | |
| | | | |
| | | | |
| | | | |
| | | | |
| | | | |
| | | | |
| | | | |
| | | | |
| | | | |

For any intermediate pressures/flows please contact Seetru